

PHOTOMETRIC TEST REPORT

MINIMA PRO ROUND
ADJUSTABLE - MATT WHITE -
4000515

astro

MINIMA PRO ROUND ADJUSTABLE - MATT

astro

LIGHT EFFICIENCY:

108 Lumen/Watt

LIGHT QUALITY:

CRI: 95.6

COLOR TEMPERATURE:

3020 K

OUTPUT: 1275 lm

PEAK: 2332 cd

POWER: 11.8 W

PF: 0.95



Tracking number: [n/a](#)

Product name:

Minima Pro Round Adjustable - Matt
White - 4000515

Item number:

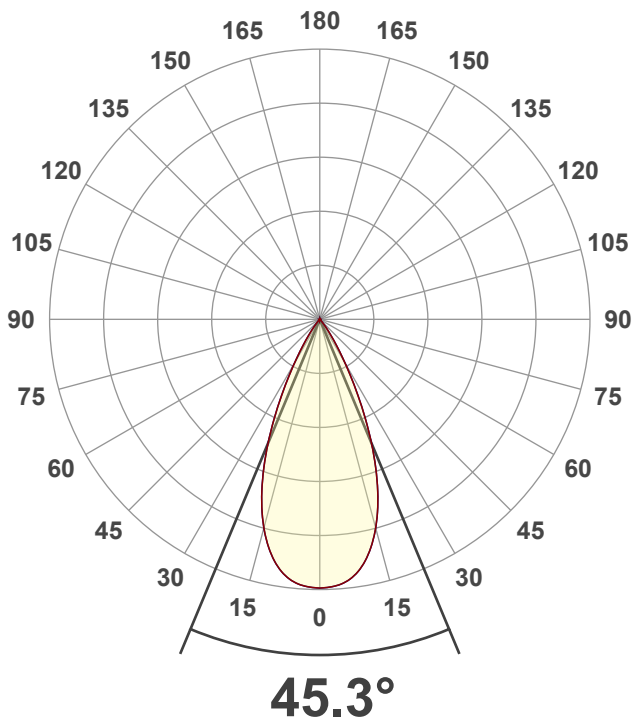
MRA-MW-HE30G1-50G1-X-D1

Date and time:

17/01/2025 15:20:52

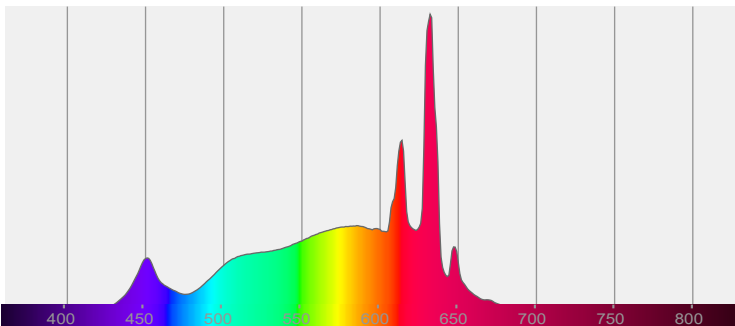
Description:

IP20 LED Downlight

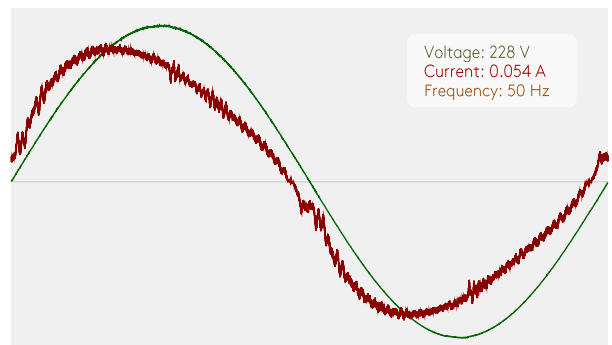


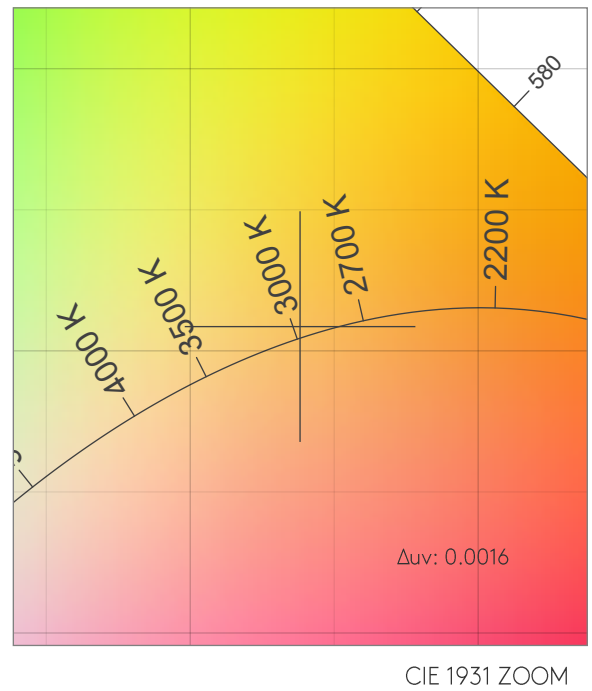
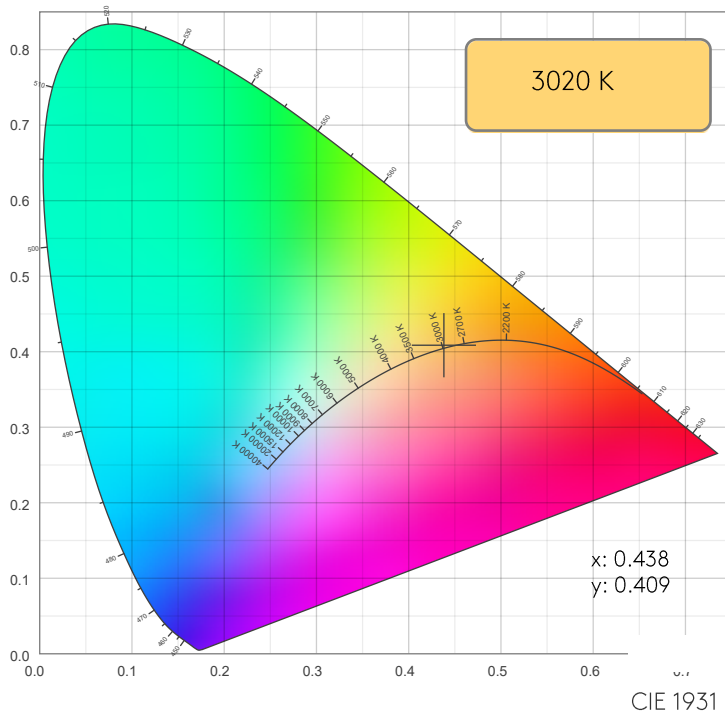
CIE 1931
x: 0.438
y: 0.409

SPECTRA



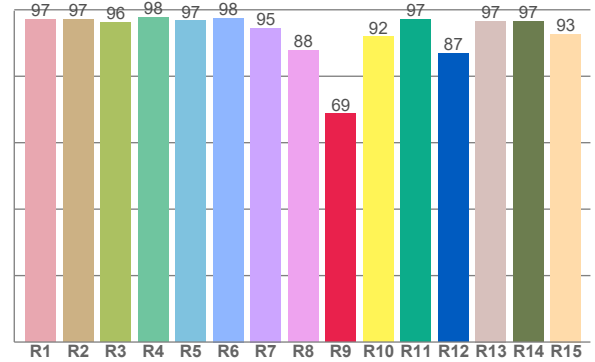
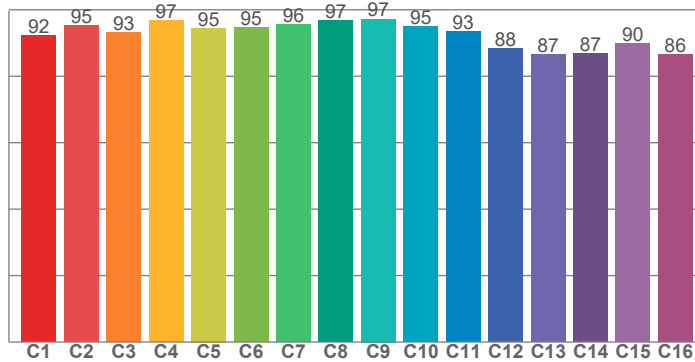
POWER





TM30: 93.1

CRI: 95.6 (R1-R8)



CRI R values, only R1-R8 are used to calculate final CRI value

R1	R2	R3	R4	R5	R6	R7	R8	R9	R10	R11	R12	R13	R14	R15
97.1	97.1	96.2	97.8	96.7	97.5	94.5	87.7	68.7	91.8	97.2	86.9	96.6	96.6	92.7

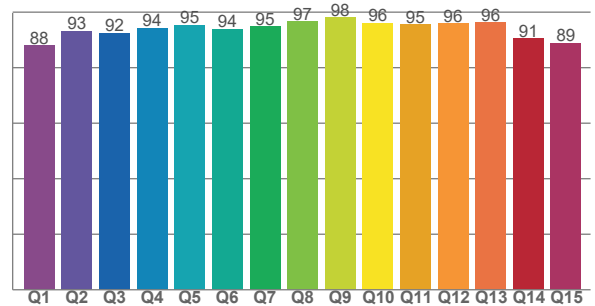
TM30 C values, 16 binned values out of total of 99 C values

C1	C2	C3	C4	C5	C6	C7	C8	C9	C10	C11	C12	C13	C14	C15	C16
92.3	95.4	93.2	96.8	94.5	94.7	95.7	96.9	97.2	95.0	93.4	88.4	86.5	86.8	89.9	86.4

CQS Q values

Q1	Q2	Q3	Q4	Q5	Q6	Q7	Q8	Q9	Q10	Q11	Q12	Q13	Q14	Q15
88.1	93.2	92.4	94.4	95.4	93.9	94.8	96.7	98.1	96.1	95.5	95.9	96.3	90.6	88.9

CQS: 93.2



COLOR PARAMETERS

Color temperature	Color rendering index	Red component	Color fidelity	Color gamut	Color quality scale	Color coordinate cie 1931	Color coordinate cie 1931	Color coordinate	Color coordinate	Color deviation from black body
CCT	CRI	CRI R9	TM30 Rf	TM30 Rg	CQS	x	y	u	v	Δuv
3020 K	95.6	68.7	93.1	100.0	93.2	0.438	0.409	0.249	0.349	0.0016

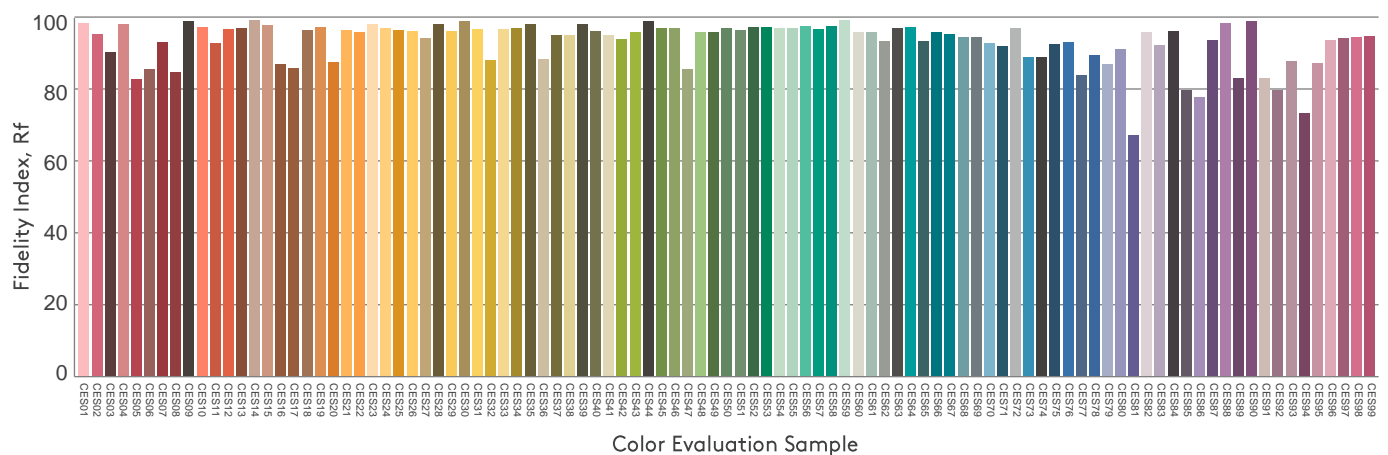
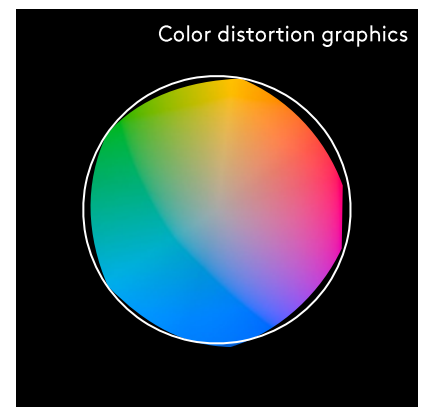
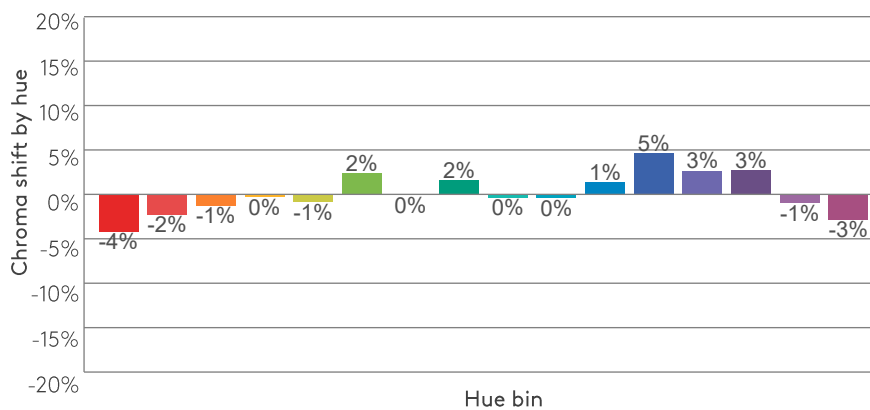
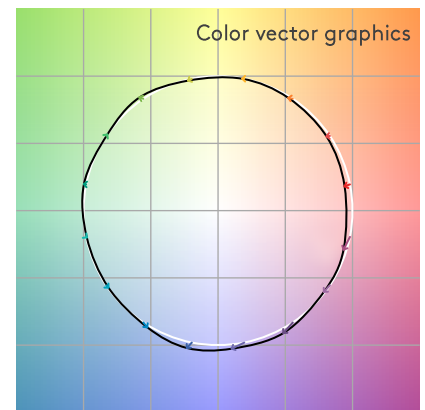
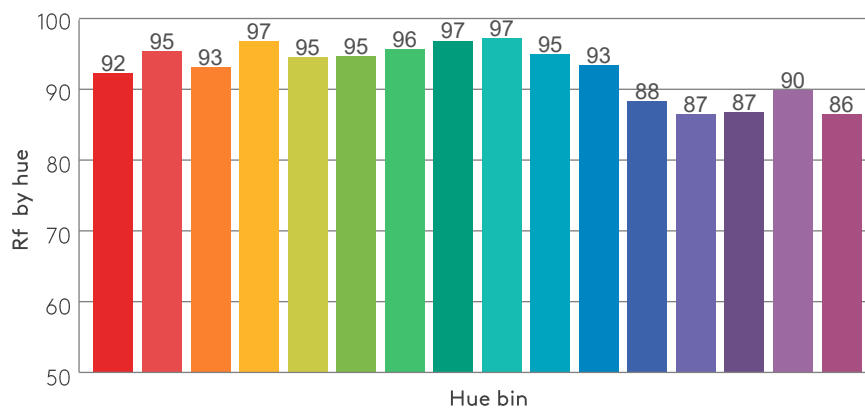
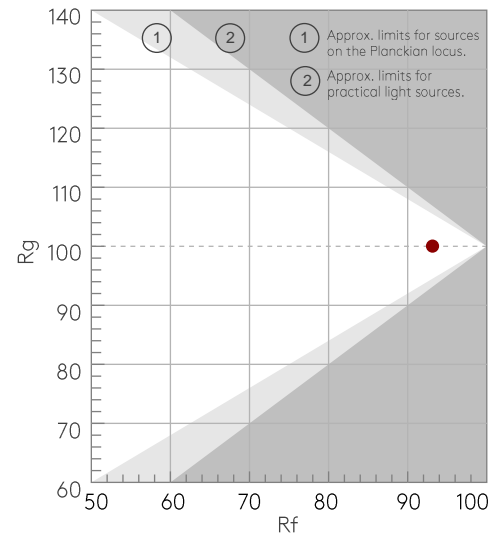
MINIMA PRO ROUND ADJUSTABLE - MATT TM30 DETAILS

astro

Rf 93.1
Fidelity index Rf

Rg 100.0
Gammut index Rg

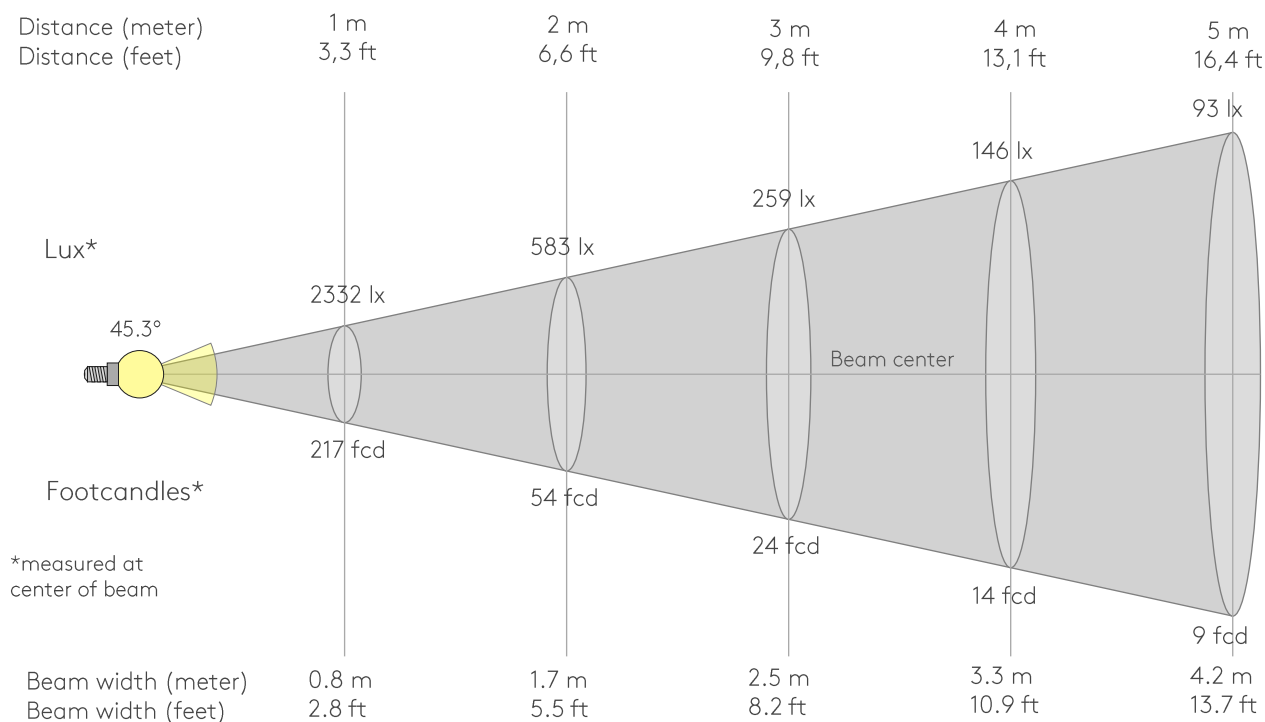
Hue Bin	Rf	Graphic shifts (%)	
		Chroma	Hue
1	92	-4%	-1%
2	95	-2%	1%
3	93	-1%	3%
4	97	0%	1%
5	95	-1%	3%
6	95	2%	2%
7	96	0%	-1%
8	97	2%	0%
9	97	0%	0%
10	95	0%	2%
11	93	1%	4%
12	88	5%	-3%
13	87	3%	-10%
14	87	3%	-10%
15	90	-1%	-6%
16	86	-3%	-10%



MINIMA PRO ROUND ADJUSTABLE - MATT

astro

BEAM DETAILS



Beam intensities from 1-20m

1m	2m	3m	4m	5m	6m	7m	8m	9m	10m	11m	12m	13m	14m	15m	16m	17m	18m	19m	20m
3.3ft	6.6ft	9.8ft	13.1ft	16.4ft	19.7ft	23ft	26.2ft	29.5ft	32.8ft	36.1ft	39.4ft	42.7ft	45.9ft	49.2ft	52.5ft	55.8ft	59.1ft	62.3ft	65.6ft
2332lx	583lx	259lx	146lx	93lx	65lx	48lx	36lx	29lx	23lx	19lx	16lx	14lx	12lx	10lx	9lx	8lx	7lx	6lx	6lx
216.6fcd	54.2fcd	24.1fcd	13.5fcd	8.7fcd	6fcd	4.4fcd	3.4fcd	2.7fcd	2.2fcd	1.8fcd	1.5fcd	1.3fcd	1.1fcd	1fcd	0.8fcd	0.7fcd	0.7fcd	0.6fcd	0.5fcd

Intensities in 0° c-plane

0°	2°	4°	6°	8°	10°	12°	14°	16°	18°	20°	22°	24°	26°	28°	30°	32°	34°	36°	38°
2332	2326	2312	2282	2233	2160	2062	1942	1798	1630	1441	1235	1020	806	610	443	308	205	130	77
100%	100%	99%	98%	96%	93%	88%	83%	77%	70%	62%	53%	44%	35%	26%	19%	13%	9%	6%	3%

Intensities in 90° c-plane

0°	2°	4°	6°	8°	10°	12°	14°	16°	18°	20°	22°	24°	26°	28°	30°	32°	34°	36°	38°
2332	2326	2312	2282	2233	2160	2062	1942	1798	1630	1441	1235	1020	806	610	443	308	205	130	77
100%	100%	99%	98%	96%	93%	88%	83%	77%	70%	62%	53%	44%	35%	26%	19%	13%	9%	6%	3%

Intensities in 180° c-plane

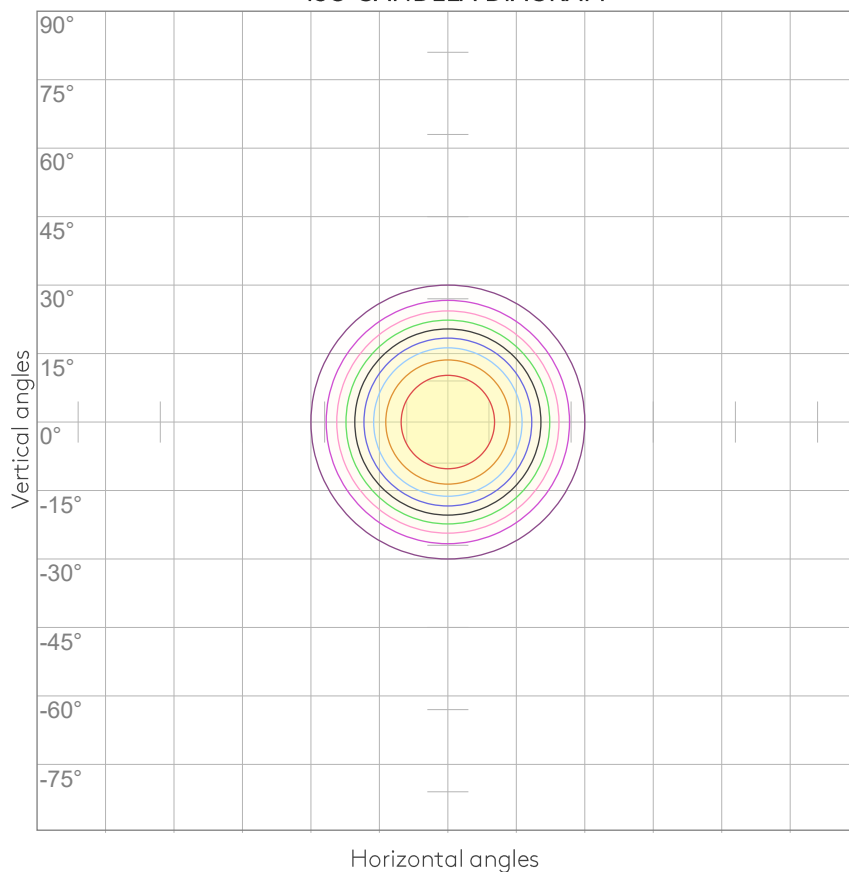
0°	2°	4°	6°	8°	10°	12°	14°	16°	18°	20°	22°	24°	26°	28°	30°	32°	34°	36°	38°
2332	2326	2312	2282	2233	2160	2062	1942	1798	1630	1441	1235	1020	806	610	443	308	205	130	77
100%	100%	99%	98%	96%	93%	88%	83%	77%	70%	62%	53%	44%	35%	26%	19%	13%	9%	6%	3%

Intensities in 270° c-plane

0°	2°	4°	6°	8°	10°	12°	14°	16°	18°	20°	22°	24°	26°	28°	30°	32°	34°	36°	38°
2332	2326	2312	2282	2233	2160	2062	1942	1798	1630	1441	1235	1020	806	610	443	308	205	130	77
100%	100%	99%	98%	96%	93%	88%	83%	77%	70%	62%	53%	44%	35%	26%	19%	13%	9%	6%	3%

Beam angle 50%	Field angle 10%	Cutoff angle 2,5%	Intensity ratio in 120° cone	Intensity ratio in 90° cone
45.3°	66.8°	77.9°	99.6%	99.0%

ISO CANDELA DIAGRAM



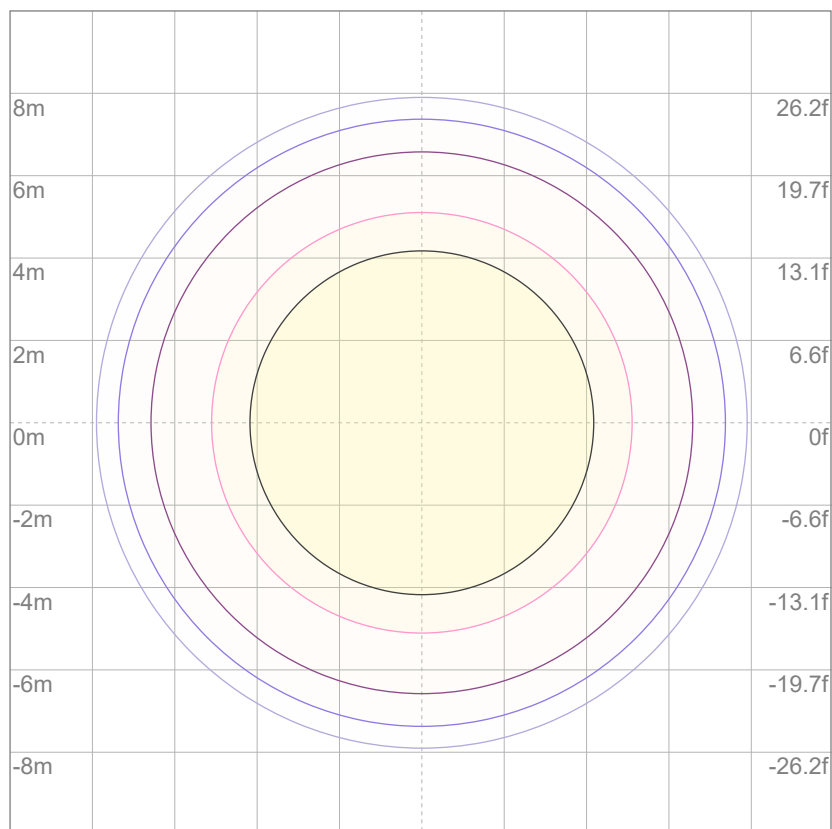
10%	233 cd
20%	466 cd
30%	700 cd
40%	933 cd
50%	1166 cd
60%	1399 cd
70%	1632 cd
80%	1865 cd
90%	2099 cd

Conditions:

Number of c-planes: 8

Candela at center: 2332 cd

ISO LUX DIAGRAM



Mounting height: 10 meters (33 feet)

3%	0.700 lx
5%	1.17 lx
10%	2.33 lx
30%	7.00 lx
50%	{LUX_10M50} lx

Conditions:

Number of c-planes: 8

Lux at center: 23.3 lx

Lux distribution on a surface
when lamp is mounted at 10
meters from the surface.

UGR

GLARE EVALUATION ACCORDING TO UGR

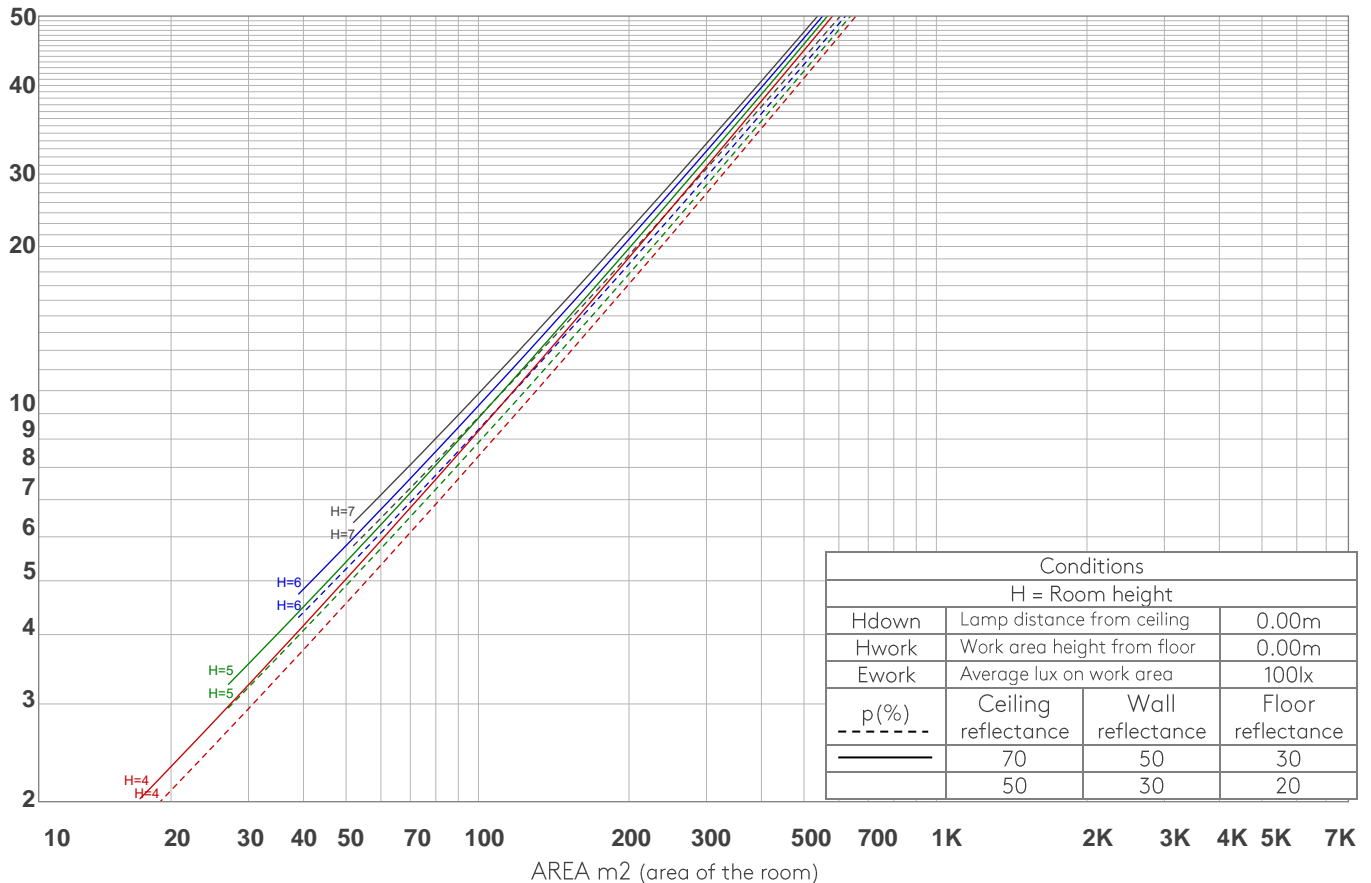
p Ceiling		70	70	50	50	30	70	70	50	50	30
p Walls		50	30	50	30	30	50	30	50	30	30
p Floor		20	20	20	20	20	20	20	20	20	20
Room size X Y		Viewing direction at right angles to lamp axis					Viewing direction parallel to lamp axis				
2H	2H	18.5	19.0	18.5	19.2	19.4	18.5	19.0	18.5	19.2	19.4
	3H	18.1	18.8	18.5	19.0	19.2	18.1	18.8	18.5	19.0	19.2
	4H	18.1	18.7	18.5	18.9	19.2	18.1	18.7	18.5	18.9	19.2
	6H	18.1	18.6	18.4	18.9	19.2	18.1	18.6	18.4	18.9	19.2
	8H	18.0	18.5	18.3	18.9	19.2	18.0	18.5	18.3	18.9	19.2
	12H	18.0	18.5	18.3	18.8	19.2	18.0	18.5	18.3	18.8	19.2
4H	2H	18.1	18.7	18.5	18.9	19.2	18.1	18.7	18.5	18.9	19.2
	3H	18.0	18.5	18.3	18.8	19.2	18.0	18.5	18.3	18.8	19.2
	4H	17.8	18.3	18.2	18.7	19.2	17.8	18.3	18.2	18.7	19.2
	6H	17.7	18.2	18.2	18.6	18.9	17.7	18.2	18.2	18.6	18.9
	8H	17.7	18.1	18.2	18.5	18.9	17.7	18.1	18.2	18.5	18.9
	12H	17.6	18.0	18.1	18.4	18.8	17.6	18.0	18.1	18.4	18.8
8H	4H	17.7	18.1	18.2	18.5	18.9	17.7	18.1	18.2	18.5	18.9
	6H	17.6	17.9	18.1	18.4	18.9	17.6	17.9	18.1	18.4	18.9
	8H	17.6	17.8	18.1	18.4	19.0	17.6	17.8	18.1	18.4	19.0
	12H	17.5	17.7	18.1	18.3	18.9	17.5	17.7	18.1	18.3	18.9
12H	4H	17.6	18.0	18.1	18.4	18.8	17.6	18.0	18.1	18.4	18.8
	6H	17.6	17.8	18.1	18.4	19.0	17.6	17.8	18.1	18.4	19.0
	8H	17.5	17.7	18.1	18.2	18.9	17.5	17.7	18.1	18.2	18.9
Variation of the observer position for the luminaire distance S											
S = 1.0H		6.3 / -13.5					6.3 / -13.5				
S = 1.5H		9.1 / -15.2					9.1 / -15.2				
S = 2.0H		11.1 / -18.0					11.1 / -18.0				
Standard table		n/a					n/a				
Correction summand		n/a					n/a				
Corrected glare indices referring to 1275 lm total luminous flux											

COEFFICIENTS OF UTILIZATION

Ceiling reflectance	80				70				50			30			10			0
Wall reflectance	70	50	30	10	70	50	30	10	50	30	10	50	30	10	50	30	10	0
Floor reflectance	20	20	20	20	20	20	20	20	20	20	20	20	20	20	20	20	20	0
RCR	(RCR: Room Cavity Ratio) Room Values are expressed as percentage of Lumens delivered to the task surface																	
0	119	119	119	119	116	116	116	116	111	111	111	106	106	106	102	102	102	100
1	114	112	110	108	112	110	108	106	106	104	103	102	101	100	98	98	97	95
2	110	105	102	99	107	104	100	98	100	98	96	98	95	94	95	93	92	90
3	105	100	95	92	103	98	94	91	96	92	90	93	91	88	91	89	87	86
4	101	94	90	86	99	93	89	86	91	88	85	89	86	84	87	85	83	81
5	97	90	85	81	95	89	84	81	87	83	80	85	82	79	84	81	79	77
6	93	85	80	77	92	85	80	76	83	79	76	82	78	75	81	77	75	74
7	89	81	76	73	88	81	76	73	80	75	72	78	75	72	77	74	71	70
8	86	78	73	69	85	77	72	69	76	72	69	75	71	69	74	71	68	67
9	83	74	69	66	82	74	69	66	73	69	66	72	68	65	71	68	65	64
10	80	71	66	63	79	71	66	63	70	66	63	69	65	63	69	65	62	61

LAMPS (number of lamps)

LUMINAIRE BUDGETARY DIAGRAM



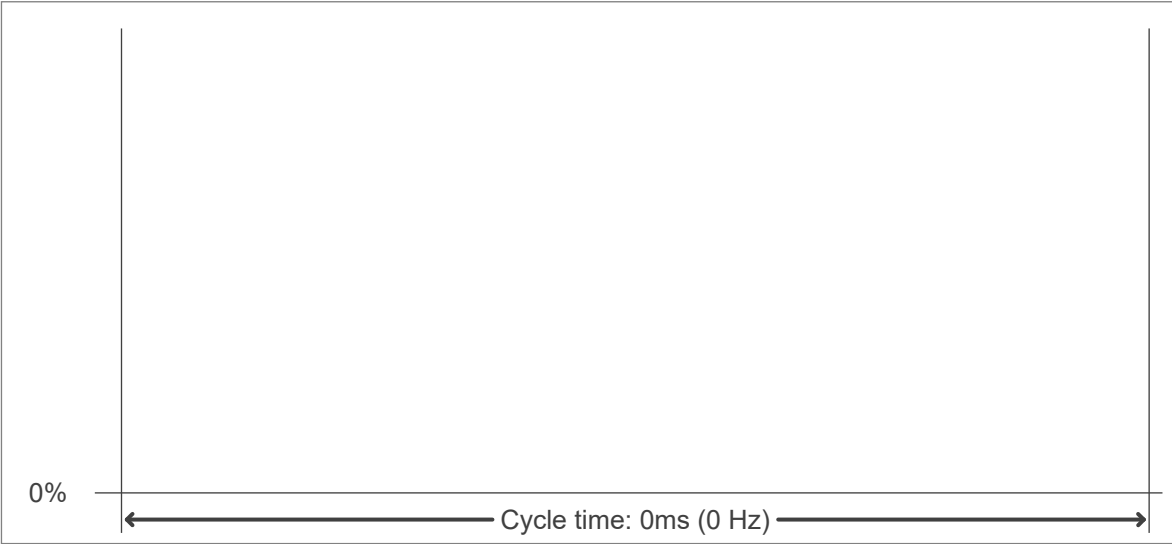
ZONAL LUMEN SUMMARY

0°-10°	10°-20°	20°-30°	30°-40°	40°-50°	50°-60°	60°-70°	70°-80°	80°-90°
215 lm	513 lm	412 lm	113 lm	12.8 lm	3.94 lm	1.35 lm	0.302 lm	0.154 lm
90°-100°	100°-110°	110°-120°	120°-130°	130°-140°	140°-150°	150°-160°	160°-170°	170°-180°
0.127 lm	0.134 lm	0.138 lm	0.210 lm	0.381 lm	0.623 lm	0.654 lm	0.425 lm	0.126 lm

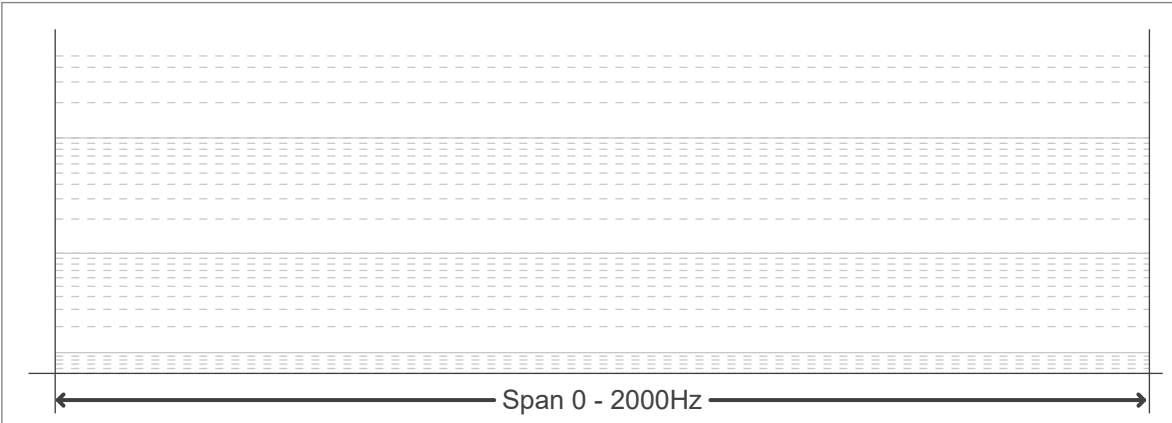
FLICKER CURVE (COMPLETE SAMPLED)



FLICKER FRAME (FRAME OF ONE FLICKER



FLICKER FFT (FREQUENCY SCOPE OF FLICKER



FLICKER RESULTS:

Flicker frequency:	n/a Hz
Flicker index:	n/a
Flicker percentage:	n/a %
SVM: (Visual flicker)	n/a

FLICKER CONDITIONS:

Sample rate:	n/a samples/second
--------------	--------------------